

ATTACHMENT C: 1943 AERIAL PHOTO







ATTACHMENT D: REFERENCES

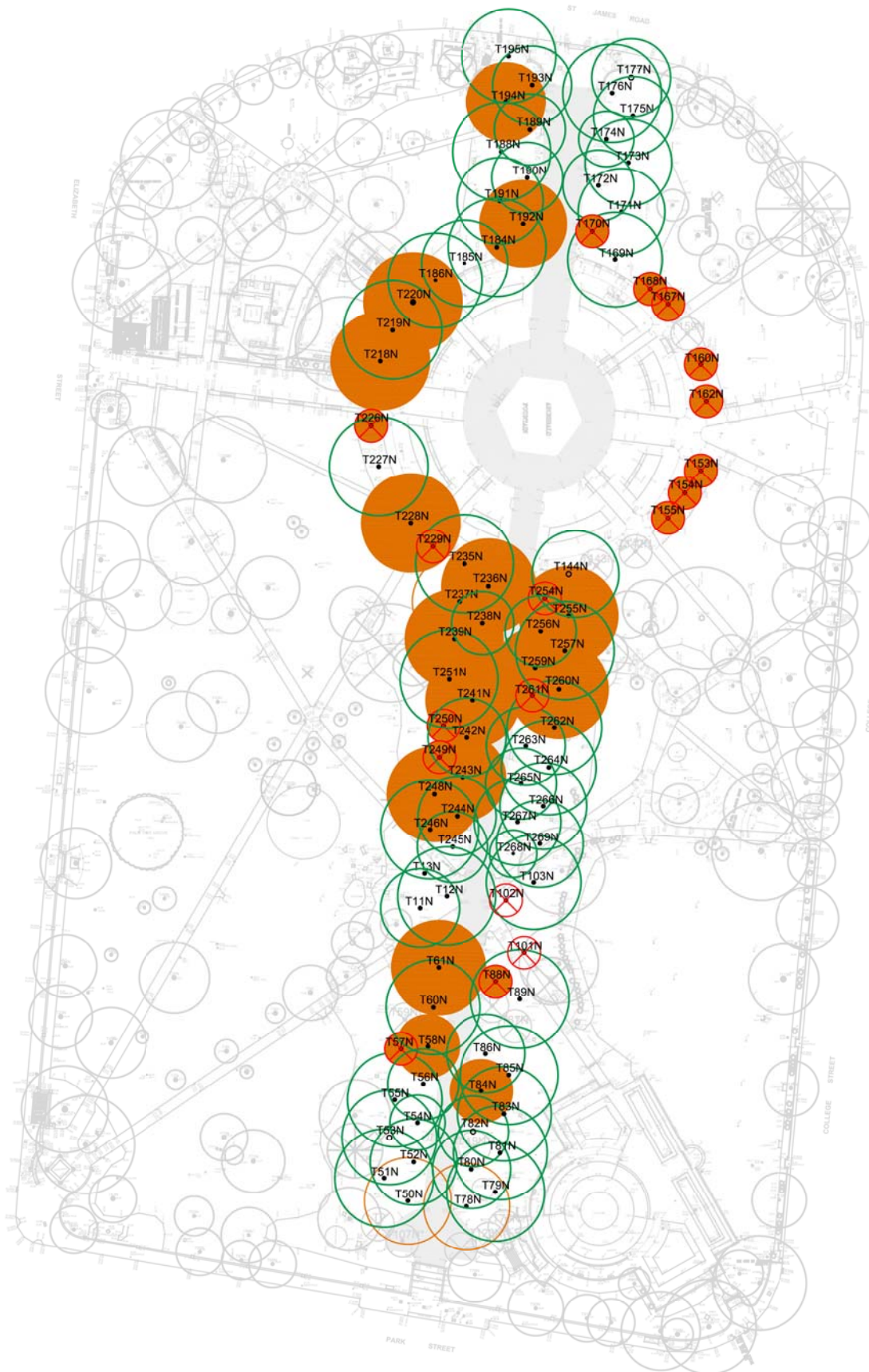


- Castor, P., 2004. *Arborist Report for Hills Fig Failure, Hyde Park South, Our Ref: 1458*. Sydney: Tree Wise Men Australia Pty Ltd.
- Castor, P., 2012. *Arboricultural Report - Health & Hazard Assessment Hyde Park Sydney*. Sydney: Tree Wise Men Australia Pty Ltd.
- City of Newcastle NSW, 2012. *Sustaining Urban Forest - Lessons from Laman Street, Newcastle*. Adelaide, The 13th National Street Tree Symposium 2012.
- Council, C. o. S., 2006. *City of Sydney Hyde Park Tree Management Plan Vol. 2 of 3*, Sydney: City of Sydney Council.
- Council, C. o. S., 2006. *City of Sydney Hyde Park Tree Management Plan Vol. 3 of 3*, Sydney: City of Sydney Council.
- Council, C. o. S., 2006. *Hyde Park Plan of Management and Masterplan Volume 1*, Sydney: City of Sydney Council.
- Council, C. o. S., 2006. *Hyde Park Tree Management Plan*, Sydney: City of Sydney Council.
- Hitchmough, J. D., 1994. *Urban Landscape Management*. s.l.:Reed International Books Australia Pty Limited trading as Inkata Press.
- Lonsdale, D. D., 2001. *Principles of Tree Hazard Assessment and Management*. 2nd ed. Sydney: The Stationary Office.
- Summerell, B., 2004. *Phellinus Report*. Sydney: Botanic Gardens Trust.
- The Sugar Factory, 2007. *Investigation into Stability of three Hill's Weeping Figs Along Laman Street Newcastle*, Sydney: The Sugar Factory.
- The Sugar Factory, 2009. *Stage 1 Assessment of Hill's Weeping Fig Ficus Microcarpa var. hillii Alongside Driver Avenue at Moore Park*, Sydney: The Sugar Factory.
- The Tree School, 2005. *Review of Tree Hazard Appraisal Reports Hyde Park North and South*, Sydney: The Tree School, Burwood, NSW, 2134.
- Tree Wise Men Australia Pty Ltd, 2003. *Significant Tree Assessment For Hyde Park (North and South) Sydney NSW*, Sydney: Tree Wise Men Australia Pty Ltd.
- Tree Wise Men Australia Pty Ltd, 2004. *Arborist's Report For Specific Hills Figs at Hyde Park, North & South, Sydney*, Sydney: Tree Wise Men Australia Pty Ltd.
- Tree Wise Men Australia Pty Ltd, 2005. *Arborist's Hazard Appraisal (Air Knife) for Hills Figs at Hyde Park North & South, Sydney, NSW*, Sydney: Tree Wise Men Australia Pty Ltd.
- Tree Wise Men Australia Pty Ltd, 2006. *Arborist's Hazard Appraisal Stage 2 for Specific Hills Figs (x36) at Hyde Park North & South Sydney NSW*, Sydney: Tree Wise Men Australia Pty Ltd.
- Tree Wise Men Australia Pty Ltd, 2007. *Aerial Inspection Assessment of Figs at Hyde Park (North) Sydney NSW*, Sydney: Tree Wise Men Australia Pty Ltd.
- Tree Wise Men Australia Pty Ltd, 2007. *Arboricultural Hazard Appraisal for Seven Fig Trees at Hyde Park South Sydney NSW*, Sydney: Tree Wise Men Australia Pty Ltd.
- Tree Wise Men Australia Pty Ltd, 2009. *Arboricultural Hazard Assessment Stage 3 For Specific Hills Figs At Hyde Park North & South Sydney NSW*, Sydney: Tree Wise Men Australia Pty Ltd.
- Tree Wise Men Australia Pty Ltd, 2012. *Completed Certification of Pruning Works, Hyde Park North and South, Hyde Park, Sydney*, Sydney: Tree Wise Men Australia Pty Ltd.
- Tree Wise Men Australia Pty Ltd, 2012. *Visual Tree Assessment (VTA) and Aerial Inspection For Specific Hills Figs at Hyde Park North and South Sydney NSW*, Sydney: Tree Wise Men Australia Pty Ltd.
- Urban Tree Management Australia Pty Ltd, 2011. *Arboricultural Hazard Assessment Resistograph Testing t/R ratio Test Hyde Park North & South Sydney NSW*, Sydney: Urban Tree Management Australia Pty Ltd.



ATTACHMENT E: PLANS





TREE WISE MEN®
AUSTRALIA PTY LTD

©2011 Tree Wise Men® Australia Pty Ltd All Rights Reserved. This Plan is copyright and shall not be reproduced or copied in any form or by any means (graphic, electronic or mechanical including photocopy) without the written permission of Tree Wise Men® Australia Pty Ltd. This Plan has been prepared for the exclusive use of the Client who we grant a license to use for the purposes of this project and site only. Tree Wise Men® Australia Pty Ltd accepts no responsibility for its use by other persons. This Plan should be considered in conjunction with other Tree Wise Men® Australia Pty Ltd documentation related to this project.

ARBORICULTURAL CONSULTANCY
84 Fuller Street, Collaroy Plateau NSW 2097
Phone +61 2 9981 5219 Fax +61 2 9971 0881
tree.wise.men@tree.wisemen.com.au
www.treewisemen.com.au



LEGEND

Tree with decay identified in 2005:



Tree not assessed in 2005 for decay:



Tree not assessed but removed after 2005 :



Tree with decay identified and removed in 2005:



Tree Protection Zone:



LOCATION PLAN HYDE PARK NORTH AND SOUTH

TITLE: ©CENTRAL AVENUE HYDE PARK NORTH TREE LOCATION PLAN (EXTENT OF DECAY BELOW GROUND, TWM IN 2005)

CLIENT: The Council of the City of Sydney

PROJECT: Assessment of Central Ave Hill's Figs (Consultant Arboricultural Services Contract No.1038).

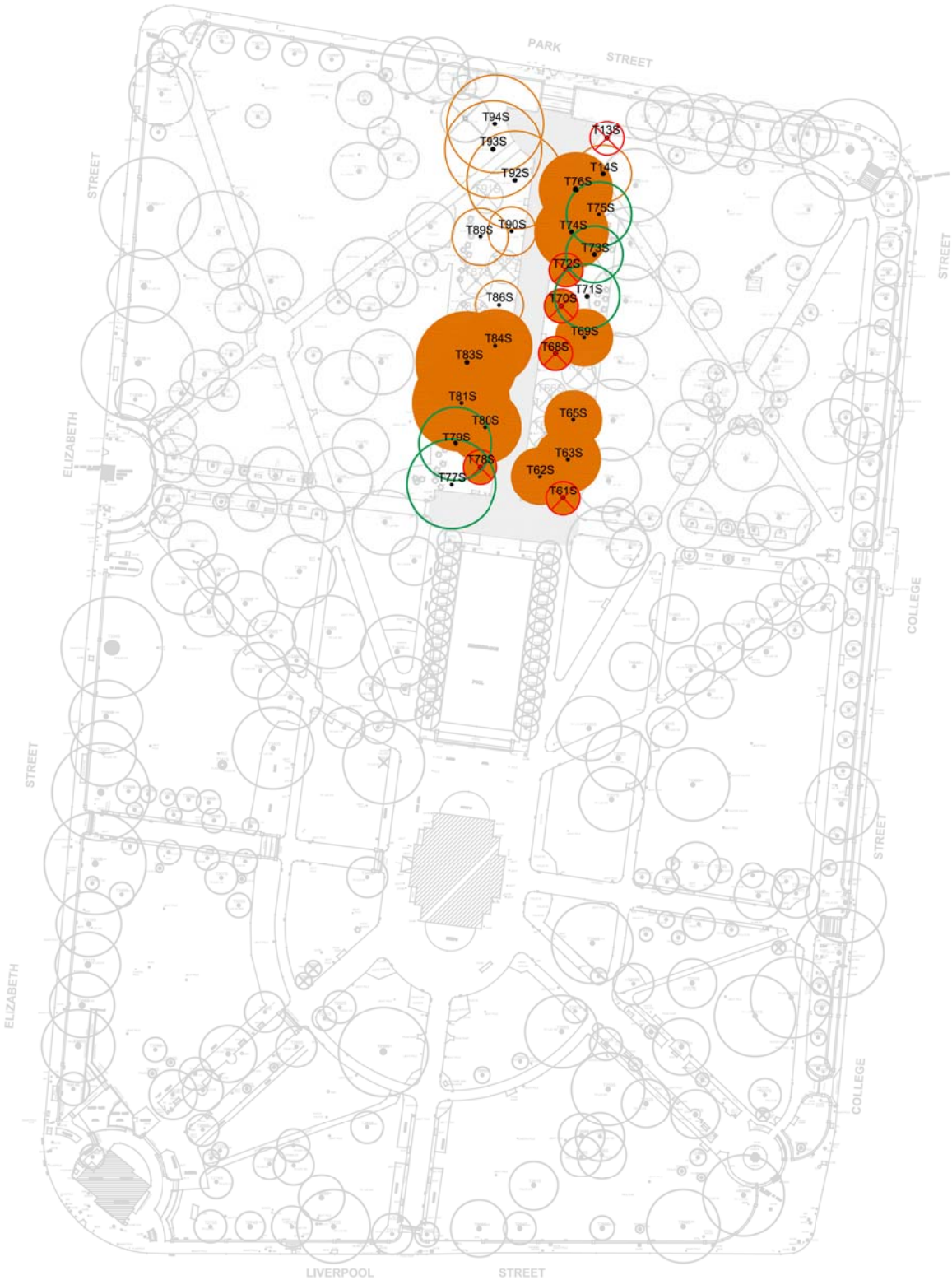
DRAWING NO: 2110-J18 TLP-Extent of Decay 2005 Sheet 1 of 2

BASED ON: Tree Wise Men® Pty Ltd report dated Sept 2005 Ref:1605AK .

DRAWN BY: SB DATE: 01/04/2013

SCALE: 1:1300@A3





TREE WISE MEN®
AUSTRALIA PTY LTD

©2011 Tree Wise Men® Australia Pty Ltd All Rights Reserved. This Plan is copyright and shall not be reproduced or copied in any form or by any means (graphic, electronic or mechanical including photocopy) without the written permission of Tree Wise Men® Australia Pty Ltd. This Plan has been prepared for the exclusive use of the Client who we grant a license to use for the purposes of this project and site only. Tree Wise Men® Australia Pty Ltd accepts no responsibility for its use by other persons. This Plan should be considered in conjunction with other Tree Wise Men® Australia Pty Ltd documentation related to this project.

ARBORICULTURAL CONSULTANCY
84 Fuller Street, Collaroy Plateau NSW 2097
Phone +61 2 9981 5219 Fax +61 2 9971 0881
tree@treewisemen.com.au
www.treewisemen.com.au



LEGEND

Tree with decay identified in 2005:



Tree not assessed for decay in 2005:



Tree not assessed but removed after 2005:



Tree assessed with decay identified and removed from 2005:



Tree Protection Zone:



LOCATION PLAN HYDE PARK NORTH AND SOUTH

TITLE:

©CENTRAL AVENUE HYDE PARK SOUTH TREE LOCATION PLAN (EXTENT OF DECAY BELOW GROUND, TWM IN 2005)

CLIENT:

The Council of the City of Sydney

PROJECT:

Assessment of Central Ave Hill's Figs (Consultant Arboricultural Services Contract No.1038).

DRAWING NO:

2110-J18TLP-Extent of Decay Sheet 2 of 2

BASED ON:

Tree Wise Men® Pty Ltd report dated Sept 2005, Ref: 1605AK.

DRAWN BY:

SB

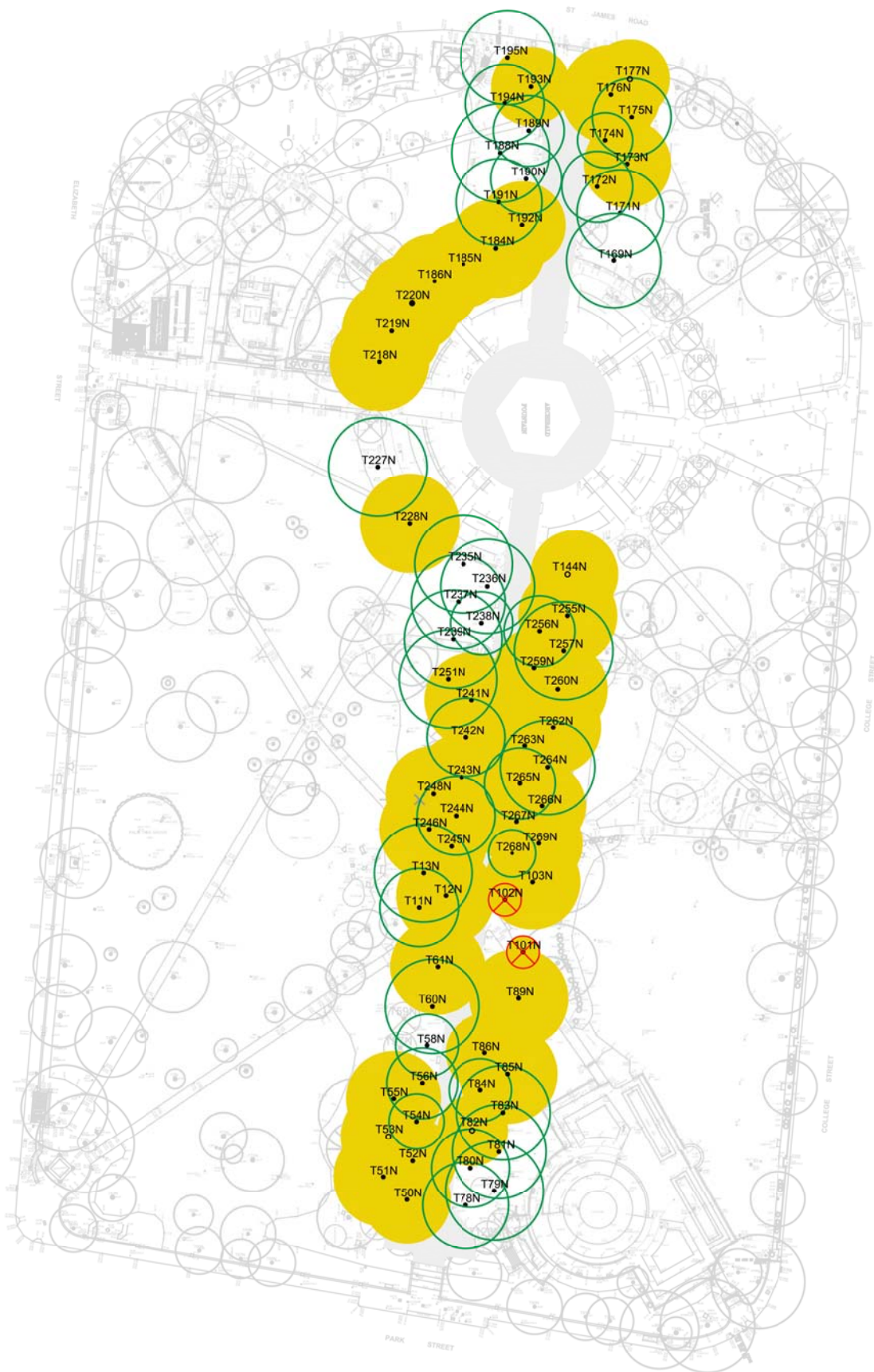
DATE:

01/04/2013

SCALE:

1:1300@A3





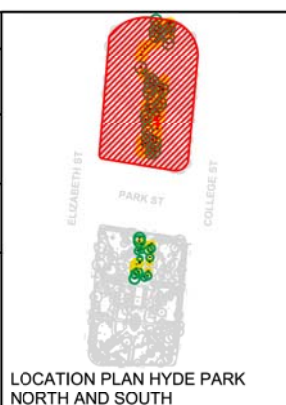
TREE WISE MEN®
AUSTRALIA PTY LTD

©2011 Tree Wise Men® Australia Pty Ltd All Rights Reserved. This Plan is copyright and shall not be reproduced or copied in any form or by any means (graphic, electronic or mechanical including photocopy) without the written permission of Tree Wise Men® Australia Pty Ltd. This Plan has been prepared for the exclusive use of the Client who we grant a license to use for the purposes of this project and site only. Tree Wise Men® Australia Pty Ltd accepts no responsibility for its use by other persons. This Plan should be considered in conjunction with other Tree Wise Men® Australia Pty Ltd documentation related to this project.

ARBORICULTURAL CONSULTANCY

84 Fuller Street, Collaroy Plateau NSW 2097
Phone +61 2 9961 5219 Fax +61 2 9971 0881
treewise@treewisemen.com.au
www.treewisemen.com.au

LEGEND	
Tree with decay identified in 2011:	T50N
Tree with decay identified and removed in 2011	T101N
Tree Protection Zone:	T78S



TITLE:	©CENTRAL AVENUE HYDE PARK NORTH TREE LOCATION PLAN (EXTENT OF DECAY BELOW GROUND, UTM IN 2011)	
CLIENT:	The Council of the City of Sydney	
PROJECT:	Assessment of Central Ave Hill's Figs (Consultant Arboricultural Services Contract No.1038).	
DRAWING NO:	2110-J18 TLP-Extent of Decay 2011 Sheet 1 of 2	
BASED ON:	Urban Tree Management report dated 24 October 2011, Ref: 14053.	
DRAWN BY:	SB	DATE: 01/04/2013
REV :	A	REV DATE: 16/04/2013
SCALE:	1:1300@A3	



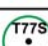


TREE WISE MEN®
AUSTRALIA PTY LTD

©2011 Tree Wise Men® Australia Pty Ltd All Rights Reserved. This Plan is copyright and shall not be reproduced or copied in any form or by any means (graphic, electronic or mechanical including photocopy) without the written permission of Tree Wise Men® Australia Pty Ltd. This Plan has been prepared for the exclusive use of the Client who we grant a license to use for the purposes of this project and site only. Tree Wise Men® Australia Pty Ltd accepts no responsibility for its use by other persons. This Plan should be considered in conjunction with other Tree Wise Men® Australia Pty Ltd documentation related to this project.


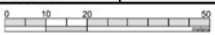
ARBORICULTURAL CONSULTANCY
84 Fuller Street, Collaroy Plateau NSW 2097
Phone +61 2 9981 5219 Fax +61 2 9971 0881
tree.wise.men@tree-wisemen.com.au
www.treewisemen.com.au

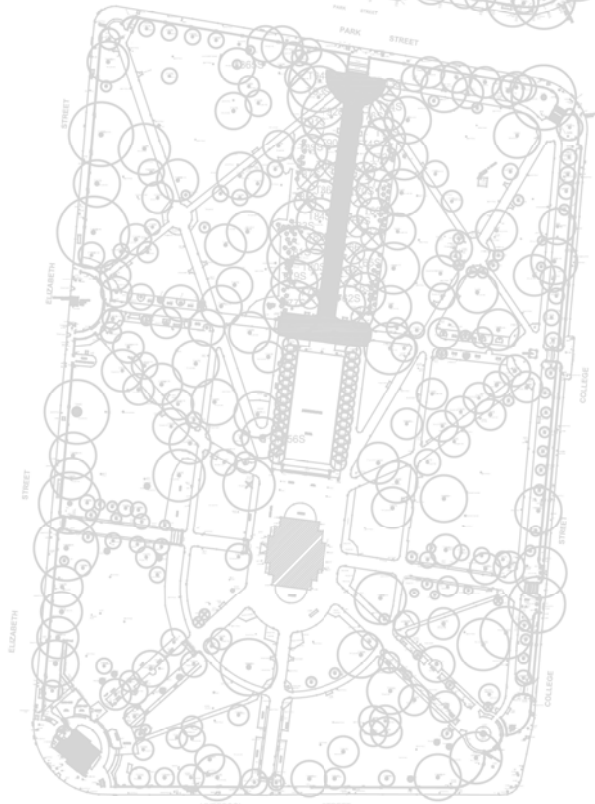
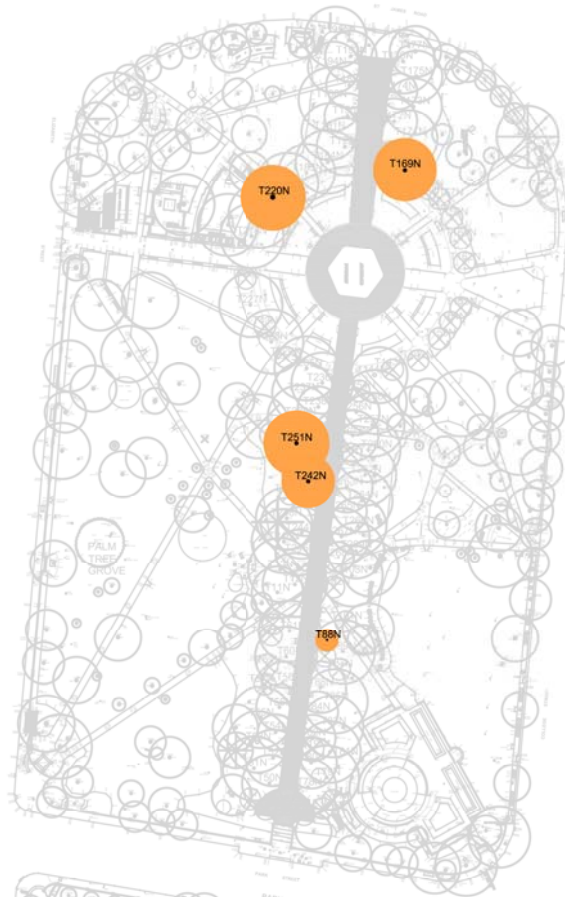
LEGEND

- Tree with decay identified in 2011:  T65S
- Tree assessed with decay and removed in 2011 (Hyde Park North only):  T57N
- Tree Protection Zone:  T77S



LOCATION PLAN HYDE PARK NORTH AND SOUTH

TITLE:	©CENTRAL AVENUE HYDE PARK SOUTH TREE LOCATION PLAN (EXTENT OF DECAY BELOW GROUND, UTM IN 2011)		
CLIENT:	The Council of the City of Sydney		
PROJECT:	Assessment of Central Ave Hill's Figs (Consultant Arboricultural Services Contract No.1038).		
DRAWING NO:	2110-J18 TLP-Extent of Decay Sheet 2 of 2		
BASED ON:	Urban Tree Management report dated 24 October 2011, Ref: 14053.		
DRAWN BY:	SB	DATE:	01/04/2013
REV :	A	REV DATE:	16/04/2013
SCALE:	1:1300@A3		
			
			



TREE WISE MEN®
AUSTRALIA PTY LTD

©2011 Tree Wise Men® Australia Pty Ltd All Rights Reserved. This Plan is copyright and shall not be reproduced or copied in any form or by any means (graphic, electronic or mechanical including photocopy) without the written permission of Tree Wise Men® Australia Pty Ltd. This Plan has been prepared for the exclusive use of the Client who we grant a license to use for the purposes of this project and site only. Tree Wise Men® Australia Pty Ltd accepts no responsibility for its use by other persons. This Plan should be considered in conjunction with other Tree Wise Men® Australia Pty Ltd documentation related to this project.

ARBORICULTURAL CONSULTANCY
84 Fuller Street, Collaroy Plateau NSW 2097
Phone +61 2 9981 5219 Fax +61 2 9971 0881
treewisea@treewisemen.com.au
www.treewisemen.com.au

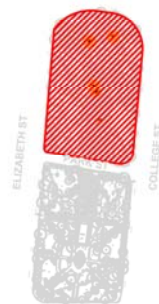


LEGEND

Tree with significant inclusions identified in 2007:



Note: Hyde Park South
Central Ave Hill's Figs Not
Assessed in 2007



LOCATION PLAN HYDE PARK
NORTH AND SOUTH

TITLE: ©CENTRAL AVENUE HYDE PARK
**NORTH ONLY TREE LOCATION
PLAN (EXTENT SIGNIFICANT OF
INCLUSIONS, TWM IN 2007)**

CLIENT: The Council of the City of Sydney

PROJECT: Assessment of Central Ave Hill's Figs
(Consultant Arboricultural Services
Contract No.1038).

DRAWING NO: 2110-J18 TLP-Inclusions Sheet 1 of 1

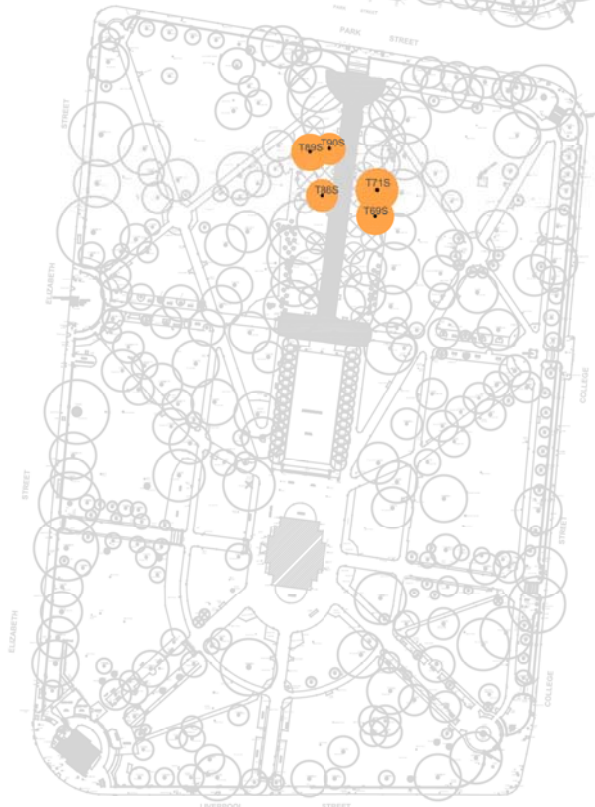
BASED ON: Tree Wise Men® Pty Ltd report 1487Aerial dated
May 2007

DRAWN BY: SB **DATE:** 3/04/2013

REV: A **REV DATE:** 16/04/2013

SCALE: 1:2500@A3





TREE WISE MEN®
AUSTRALIA PTY LTD

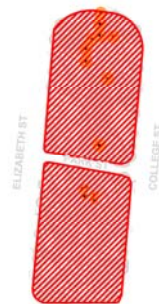
©2011 Tree Wise Men® Australia Pty Ltd All Rights Reserved. This Plan is copyright and shall not be reproduced or copied in any form or by any means (graphic, electronic or mechanical including photocopy) without the written permission of Tree Wise Men® Australia Pty Ltd. This Plan has been prepared for the exclusive use of the Client who we grant a license to use for the purposes of this project and site only. Tree Wise Men® Australia Pty Ltd accepts no responsibility for its use by other persons. This Plan should be considered in conjunction with other Tree Wise Men® Australia Pty Ltd documentation related to this project.

ARBORICULTURAL CONSULTANCY
84 Fuller Street, Collaroy Plateau NSW 2097
Phone +61 2 9981 5219 Fax +61 2 9971 0881
treewisemen@treewisemen.com.au
www.treewisemen.com.au



LEGEND

Tree with significant inclusions identified in 2007:



LOCATION PLAN HYDE PARK
NORTH AND SOUTH

TITLE: ©CENTRAL AVENUE HYDE PARK
TREE LOCATION PLAN
(EXTENT OF SIGNIFICANT
INCLUSIONS, TWM IN 2012)

CLIENT: The Council of the City of Sydney

PROJECT: Assessment of Central Ave Hill's Figs
(Consultant Arboricultural Services
Contract No.1038).

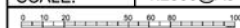
DRAWING NO: 2110-J18 TLP-Inclusions Sheet 1 of 1

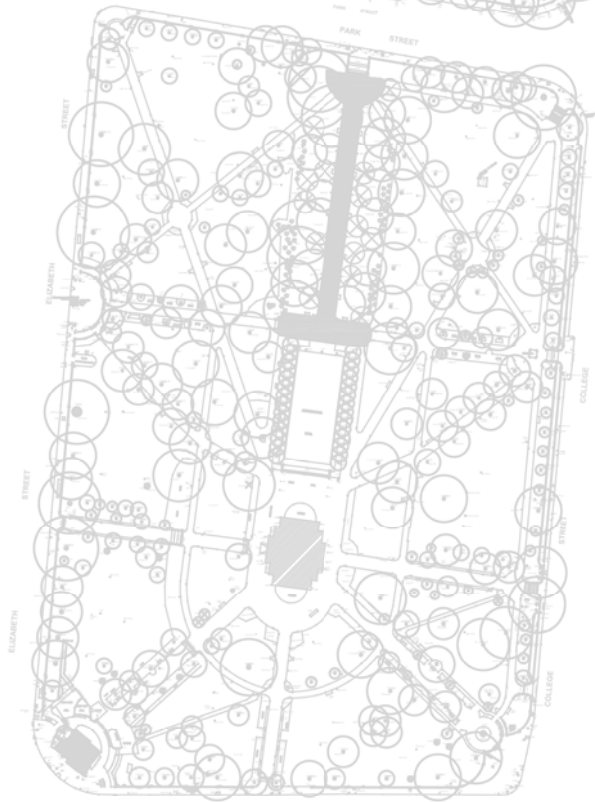
BASED ON: Tree Wise Men® Pty Ltd report FinalRevC
1487-2012Mon dated Jul 2012

DRAWN BY: SB **DATE:** 3/04/2013

REV DATE: A **REV DATE:** 16/04/2013

SCALE: 1:2500@A3





TREE WISE MEN®
AUSTRALIA PTY LTD

©2011 Tree Wise Men® Australia Pty Ltd All Rights Reserved. This Plan is copyright and shall not be reproduced or copied in any form or by any means (graphic, electronic or mechanical including photocopy) without the written permission of Tree Wise Men® Australia Pty Ltd. This Plan has been prepared for the exclusive use of the Client who we grant a license to use for the purposes of this project and site only. Tree Wise Men® Australia Pty Ltd accepts no responsibility for its use by other persons. This Plan should be considered in conjunction with other Tree Wise Men® Australia Pty Ltd documentation related to this project.

ARBORICULTURAL CONSULTANCY
84 Fuller Street, Collaroy Plateau NSW 2097
Phone +61 2 9981 5219 Fax +61 2 9971 0881
treewisemen@treewisemen.com.au
www.treewisemen.com.au

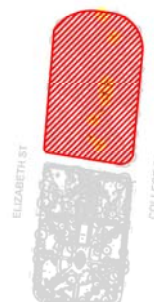


LEGEND

Tree With Branch/Trunk Damage Identified in 2007:

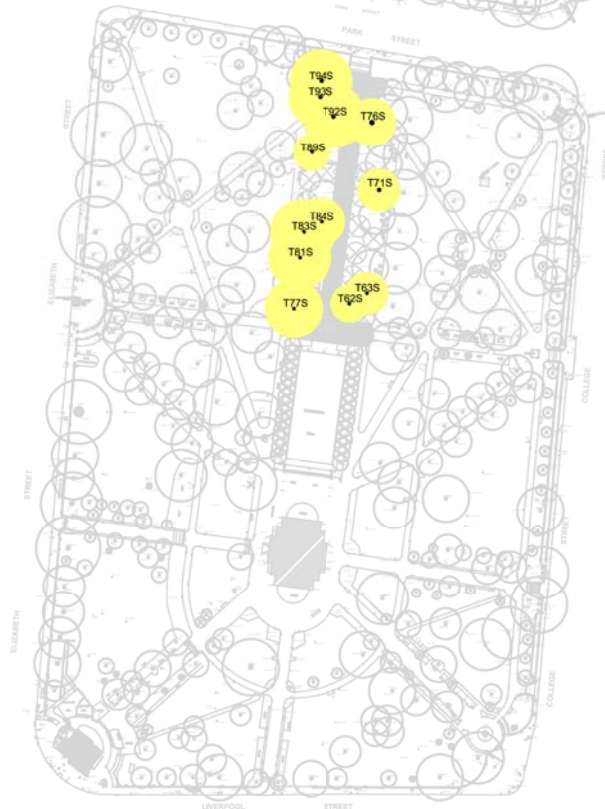
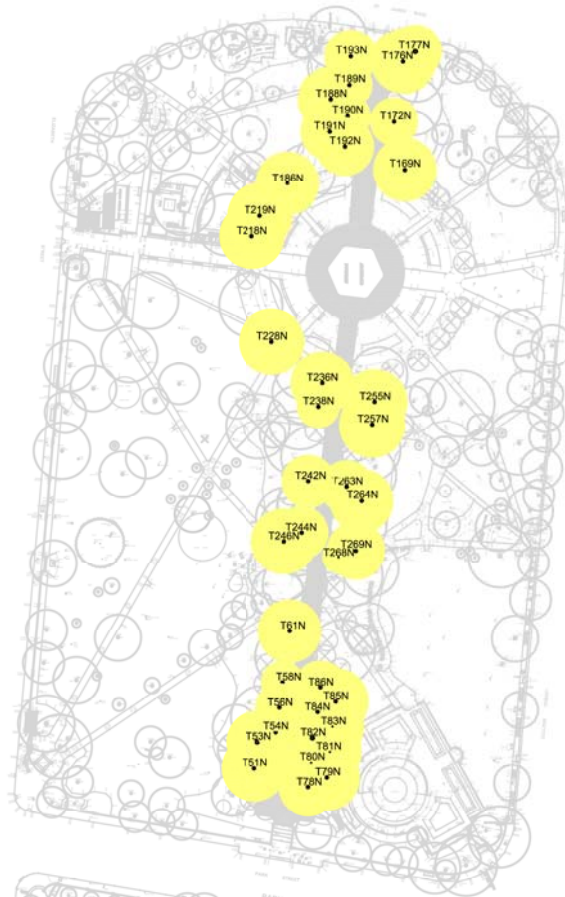


Note: Hyde Park South Central Avenue Hill's Figs Not Assessed in 2007



LOCATION PLAN HYDE PARK NORTH AND SOUTH

TITLE:	©CENTRAL AVENUE HYDE PARK NORTH ONLY TREE LOCATION PLAN (EXTENT OF BRANCH/TRUNK DAMAGE, TWM IN 2007)	
CLIENT:	The Council of the City of Sydney	
PROJECT:	Assessment of Central Ave Hill's Figs (Consultant Arboricultural Services Contract No.1038).	
DRAWING NO:	2110-J18 TLP-Branch/Trunk Damage Sheet 1 of 1	
BASED ON:	Tree Wise Men® Pty Ltd report 1487 Aerial dated May 2007	
DRAWN BY:	SB	DATE: 3/04/2013
SCALE:	1:2500@A3	
0 10 20 50 80 100		



TREE WISE MEN®
AUSTRALIA PTY LTD

©2011 Tree Wise Men® Australia Pty Ltd All Rights Reserved. This Plan is copyright and shall not be reproduced or copied in any form or by any means (graphic, electronic or mechanical including photocopy) without the written permission of Tree Wise Men® Australia Pty Ltd. This Plan has been prepared for the exclusive use of the Client who we grant a license to use for the purposes of this project and site only. Tree Wise Men® Australia Pty Ltd accepts no responsibility for its use by other persons. This Plan should be considered in conjunction with other Tree Wise Men® Australia Pty Ltd documentation related to this project.

ARBORICULTURAL CONSULTANCY
84 Fuller Street, Collaroy Plateau NSW 2097
Phone +61 2 9981 5219 Fax +61 2 9971 0881
treewise@tree-wisemen.com.au
www.treewisemen.com.au

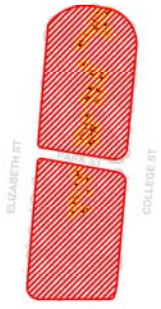


LEGEND

Tree with branch/trunk damage identified in 2012:

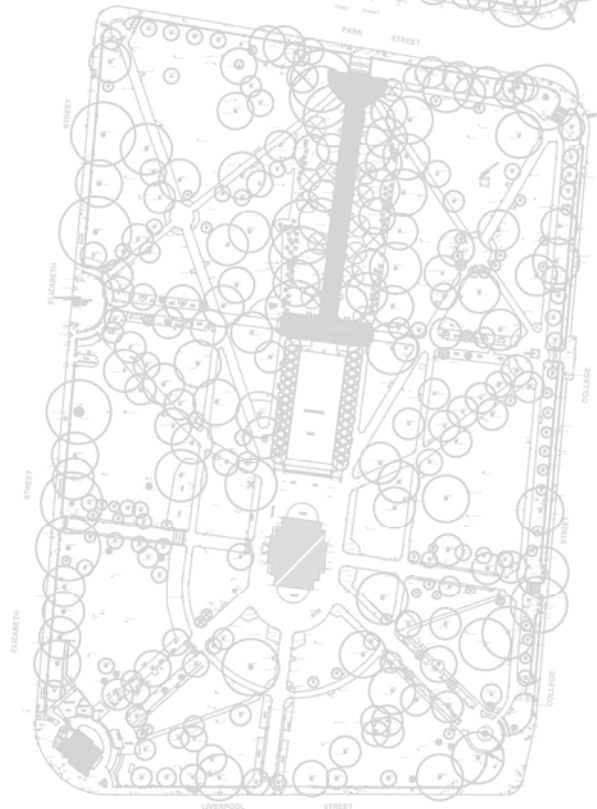
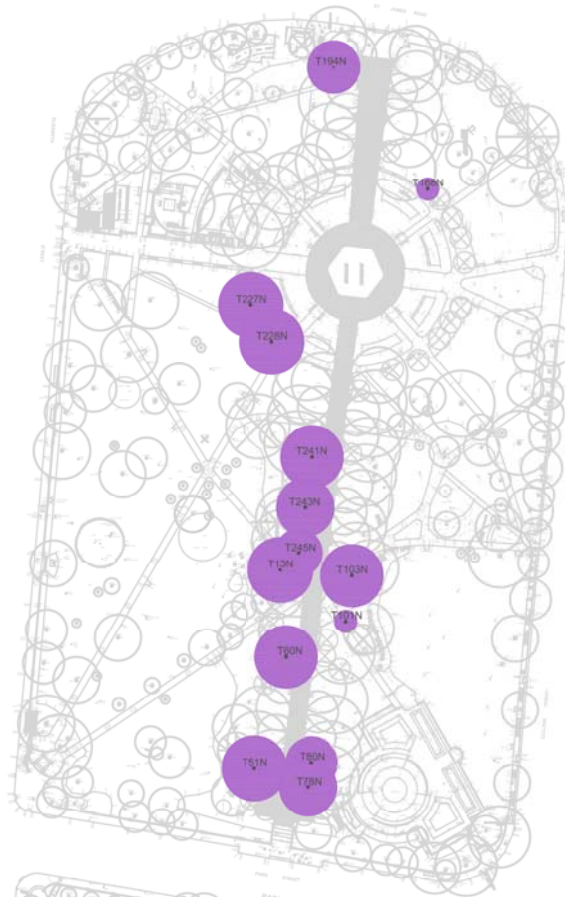


T61N



LOCATION PLAN HYDE PARK NORTH AND SOUTH

TITLE:	©CENTRAL AVENUE HYDE PARK TREE LOCATION PLAN (EXTENT OF BRANCH/TRUNK DAMAGE, TWM IN 2012)		
CLIENT:	The Council of the City of Sydney		
PROJECT:	Assessment of Central Ave Hill's Figs (Consultant Arboricultural Services Contract No.1038).		
DRAWING NO:	2110-J18 TLP-Branch/Trunk Damage Sheet 1 of 1		
BASED ON:	Tree Wise Men® Pty Ltd report FinalRevC 1487-2012Mon dated Jul 2012		
DRAWN BY:	SB	DATE:	3/04/2013
SCALE:	1:2500@A3		
0 10 20 30 40 50 60 70 80 90 100			



TREE WISE MEN®
AUSTRALIA PTY LTD

©2011 Tree Wise Men® Australia Pty Ltd All Rights Reserved. This Plan is copyright and shall not be reproduced or copied in any form or by any means (graphic, electronic or mechanical including photocopy) without the written permission of Tree Wise Men® Australia Pty Ltd. This Plan has been prepared for the exclusive use of the Client who we grant a license to use for the purposes of this project and site only. Tree Wise Men® Australia Pty Ltd accepts no responsibility for its use by other persons. This Plan should be considered in conjunction with other Tree Wise Men® Australia Pty Ltd documentation related to this project.

ARBORICULTURAL CONSULTANCY
84 Fuller Street, Collaroy Plateau NSW 2097
Phone +61 2 9981 5219 Fax +61 2 9971 0881
treewisea@treewisemen.com.au
www.treewisemen.com.au

LEGEND

Tree with branch failure identified in 2007:

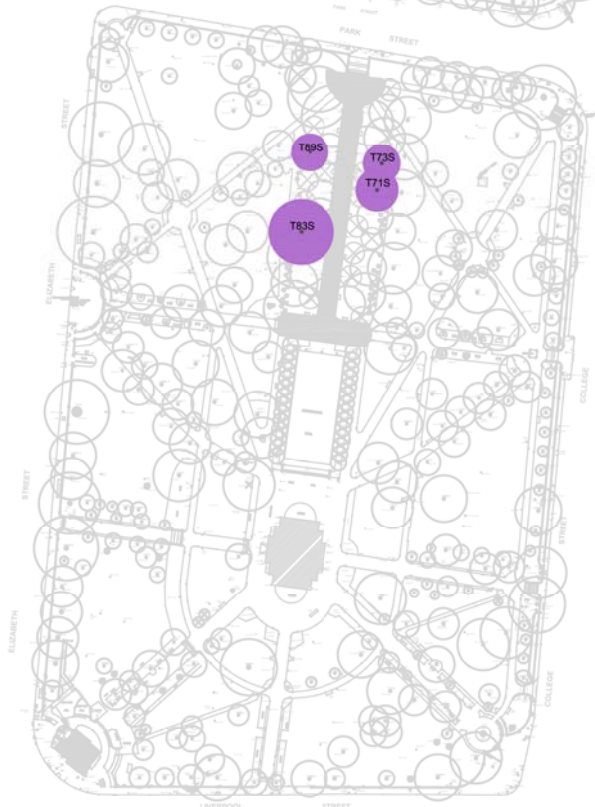
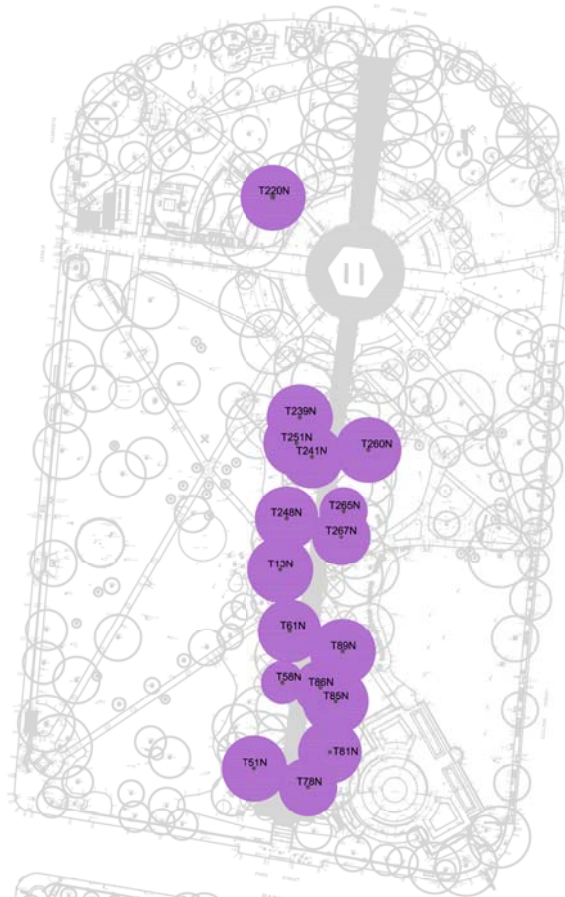


Note: Hyde Park South Central Avenue Hill's Figs Not Assessed in 2007



LOCATION PLAN HYDE PARK NORTH AND SOUTH

TITLE:	©CENTRAL AVENUE HYDE PARK NORTH ONLY TREE LOCATION PLAN (EXTENT OF BRANCH FAILURE, TWM IN 2007)		
CLIENT:	The Council of the City of Sydney		
PROJECT:	Assessment of Central Ave Hill's Figs (Consultant Arboricultural Services Contract No.1038).		
DRAWING NO:	2110-J18 TLP-Branch Failure Sheet 1 of 1		
BASED ON:	Tree Wise Men® Pty Ltd report 1487 Aerial dated May 2007		
DRAWN BY:	SB	DATE:	3/04/2013
SCALE:	1:2500@A3		
0 10 20 30 40 50 60 80 100			



TREE WISE MEN®
AUSTRALIA PTY LTD

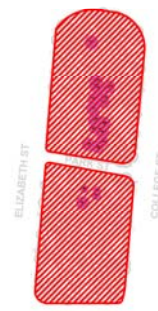
©2011 Tree Wise Men® Australia Pty Ltd All Rights Reserved. This Plan is copyright and shall not be reproduced or copied in any form or by any means (graphic, electronic or mechanical including photocopy) without the written permission of Tree Wise Men® Australia Pty Ltd. This Plan has been prepared for the exclusive use of the Client who we grant a license to use for the purposes of this project and site only. Tree Wise Men® Australia Pty Ltd accepts no responsibility for its use by other persons. This Plan should be considered in conjunction with other Tree Wise Men® Australia Pty Ltd documentation related to this project.

ARBORICULTURAL CONSULTANCY
84 Fuller Street, Collaroy Plateau NSW 2097
Phone +61 2 9981 5219 Fax +61 2 9971 0881
treewisemen@treewisemen.com.au
www.treewisemen.com.au



LEGEND

Tree with branch failure identified in 2012:



LOCATION PLAN HYDE PARK
NORTH AND SOUTH

TITLE: ©CENTRAL AVENUE HYDE PARK
TREE LOCATION PLAN
(EXTENT OF BRANCH FAILURE,
TWM IN 2012)

CLIENT: The Council of the City of Sydney

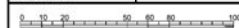
PROJECT: Assessment of Central Ave Hill's Figs
(Consultant Arboricultural Services
Contract No.1038).

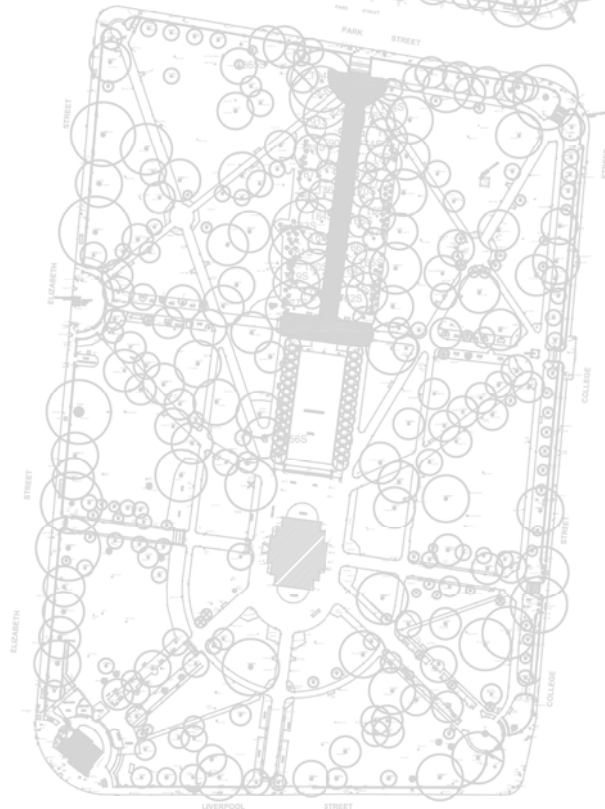
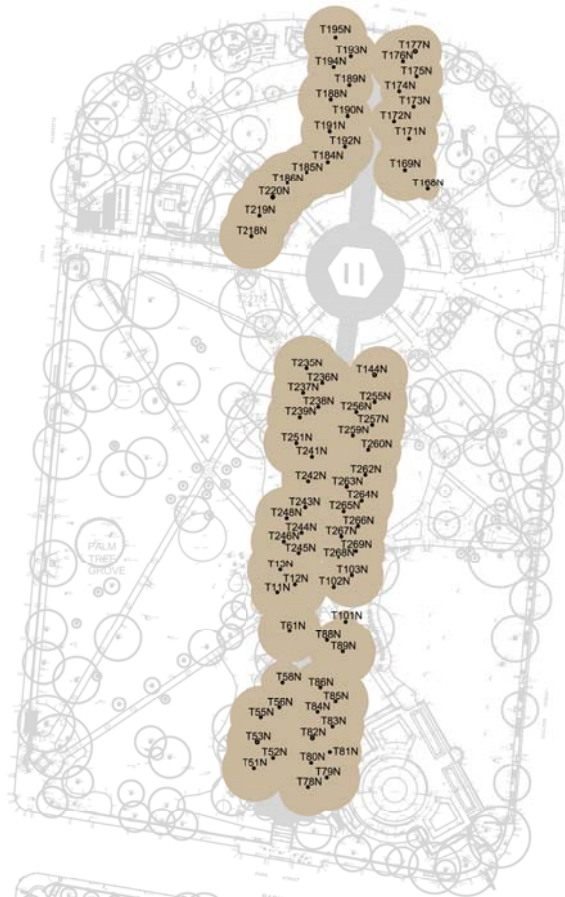
DRAWING NO: 2110-J18 TLP-Branch Failure Sheet 1 of 1

BASED ON: Tree Wise Men® Pty Ltd report FinalRevC Mon
1497-2012Mon dated Jul 2012

DRAWN BY: SB **DATE:** 3/04/2013

SCALE: 1:2500@A3





TREE WISE MEN®
AUSTRALIA PTY LTD

©2011 Tree Wise Men® Australia Pty Ltd All Rights Reserved. This Plan is copyright and shall not be reproduced or copied in any form or by any means (graphic, electronic or mechanical including photocopy) without the written permission of Tree Wise Men® Australia Pty Ltd. This Plan has been prepared for the exclusive use of the Client who we grant a license to use for the purposes of this project and site only. Tree Wise Men® Australia Pty Ltd accepts no responsibility for its use by other persons. This Plan should be considered in conjunction with other Tree Wise Men® Australia Pty Ltd documentation related to this project.

ARBORICULTURAL CONSULTANCY
84 Fuller Street, Collaroy Plateau NSW 2097
Phone +61 2 9981 5219 Fax +61 2 9971 0881
treewisea@treewisemen.com.au
www.treewisemen.com.au

LEGEND

Tree with deadwood identified in 2007:

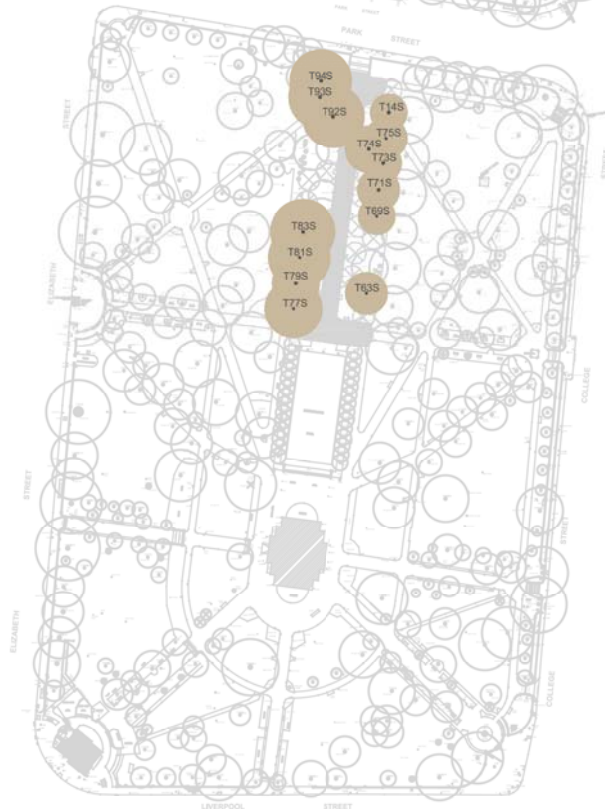
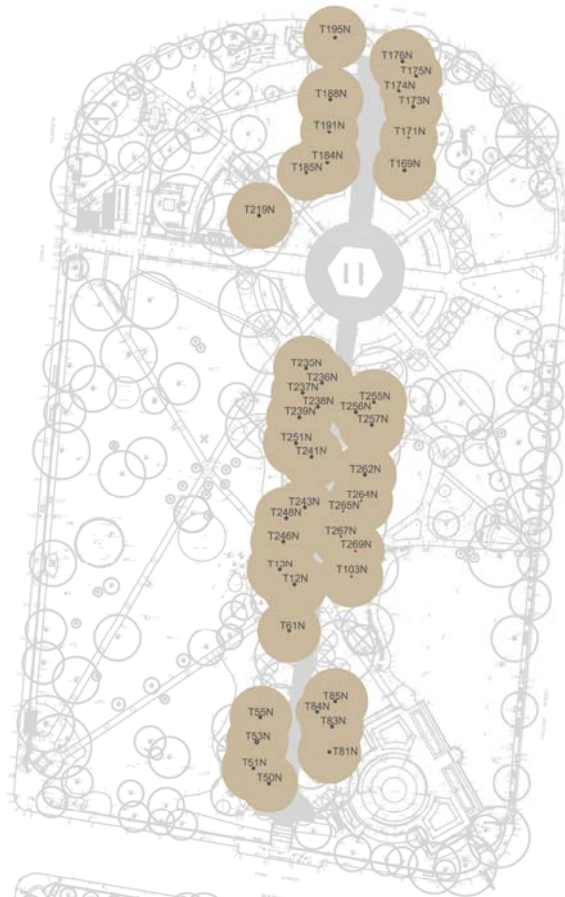


Note: Hyde Park South Central Ave Hill's Figs Not Assessed in 2007



LOCATION PLAN HYDE PARK NORTH AND SOUTH

TITLE:	©CENTRAL AVENUE HYDE PARK NORTH ONLY TREE LOCATION PLAN (EXTENT OF DEADWOOD, TWM IN 2007)		
CLIENT:	The Council of the City of Sydney		
PROJECT:	Assessment of Central Ave Hill's Figs (Consultant Arboricultural Services Contract No.1038).		
DRAWING NO:	2110-J18 TLP-Deadwood Sheet 1 of 1		
BASED ON:	Tree Wise Men® Pty Ltd report 1487Aerial dated May 2007		
DRAWN BY:	SB	DATE:	3/04/2013
SCALE:	1:2500@A3		



TREE WISE MEN®
AUSTRALIA PTY LTD

©2011 Tree Wise Men® Australia Pty Ltd All Rights Reserved. This Plan is copyright and shall not be reproduced or copied in any form or by any means (graphic, electronic or mechanical including photocopy) without the written permission of Tree Wise Men® Australia Pty Ltd. This Plan has been prepared for the exclusive use of the Client who we grant a license to use for the purposes of this project and site only. Tree Wise Men® Australia Pty Ltd accepts no responsibility for its use by other persons. This Plan should be considered in conjunction with other Tree Wise Men® Australia Pty Ltd documentation related to this project.

ARBORICULTURAL CONSULTANCY
84 Fuller Street, Collaroy Plateau NSW 2097
Phone +61 2 9981 5219 Fax +61 2 9971 0881
treewise@treewisemen.com.au
www.treewisemen.com.au



LEGEND

Tree with deadwood identified in 2012:



LOCATION PLAN HYDE PARK
NORTH AND SOUTH

TITLE: ©CENTRAL AVENUE HYDE PARK
TREE LOCATION PLAN
(EXTENT OF DEADWOOD, TWM
IN 2012)

CLIENT: The Council of the City of Sydney

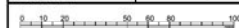
PROJECT: Assessment of Central Ave Hill's Figs
(Consultant Arboricultural Services
Contract No.1038).

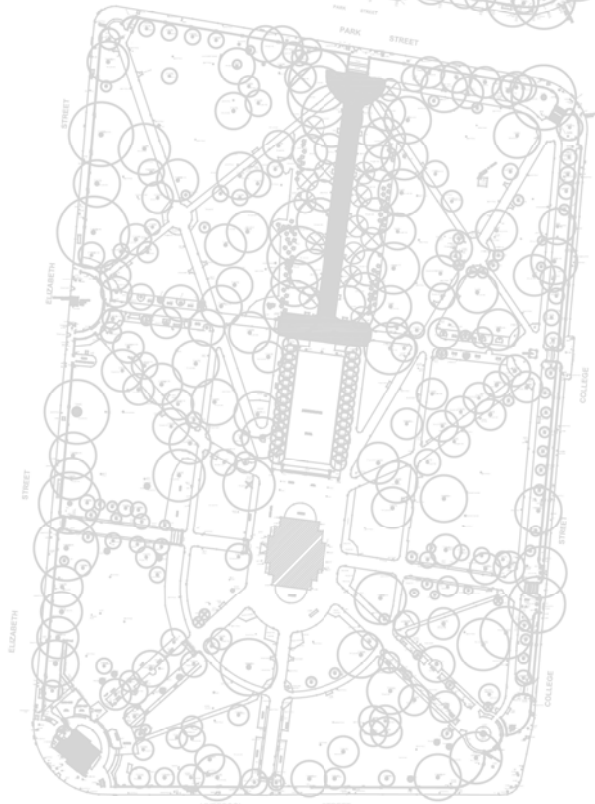
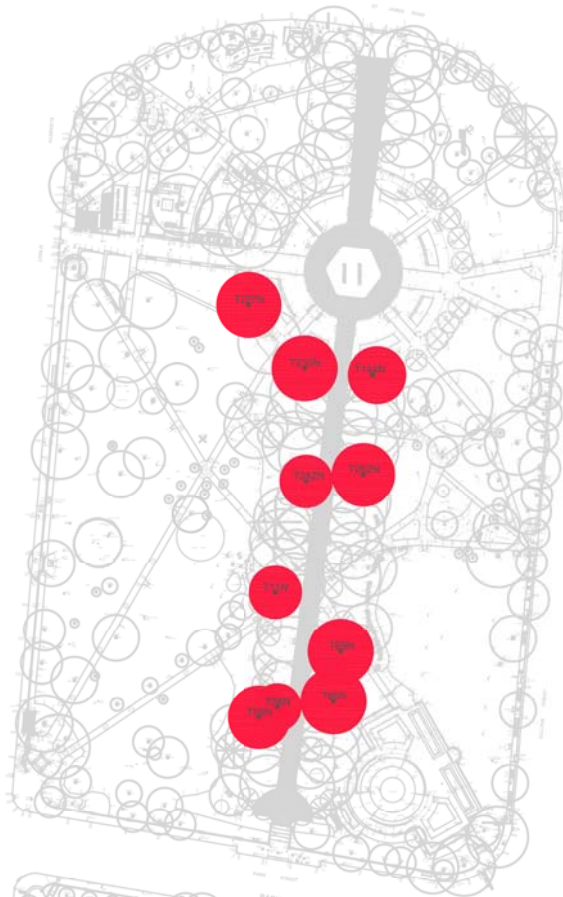
DRAWING NO: 2110-J18 TLP-Deadwood Sheet 1 of 1

BASED ON: Tree Wise Men® Pty Ltd report FinalRevC
1487-2012Mon dated Jul 2012

DRAWN BY: SB **DATE:** 3/04/2013

SCALE: 1:2500@A3





TREE WISE MEN®
AUSTRALIA PTY LTD

©2011 Tree Wise Men® Australia Pty Ltd All Rights Reserved. This Plan is copyright and shall not be reproduced or copied in any form or by any means (graphic, electronic or mechanical including photocopy) without the written permission of Tree Wise Men® Australia Pty Ltd. This Plan has been prepared for the exclusive use of the Client who we grant a license to use for the purposes of this project and site only. Tree Wise Men® Australia Pty Ltd accepts no responsibility for its use by other persons. This Plan should be considered in conjunction with other Tree Wise Men® Australia Pty Ltd documentation related to this project.

ARBORICULTURAL CONSULTANCY
84 Fuller Street, Collaroy Plateau NSW 2097
Phone +61 2 9981 5219 Fax +61 2 9971 0881
treewise@tree-wisemen.com.au
www.treewisemen.com.au

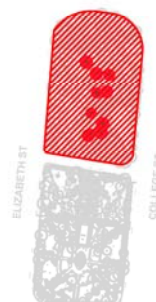


LEGEND

Tree with sunscald identified in 2007:

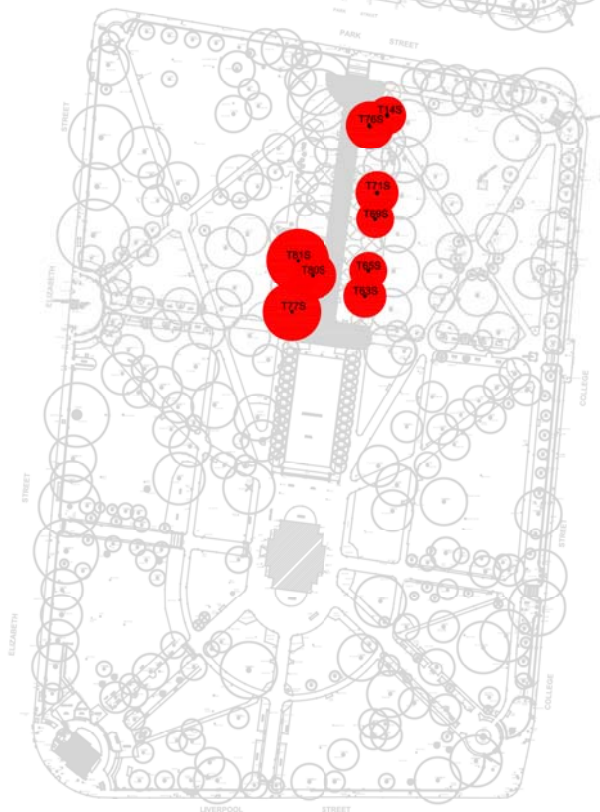
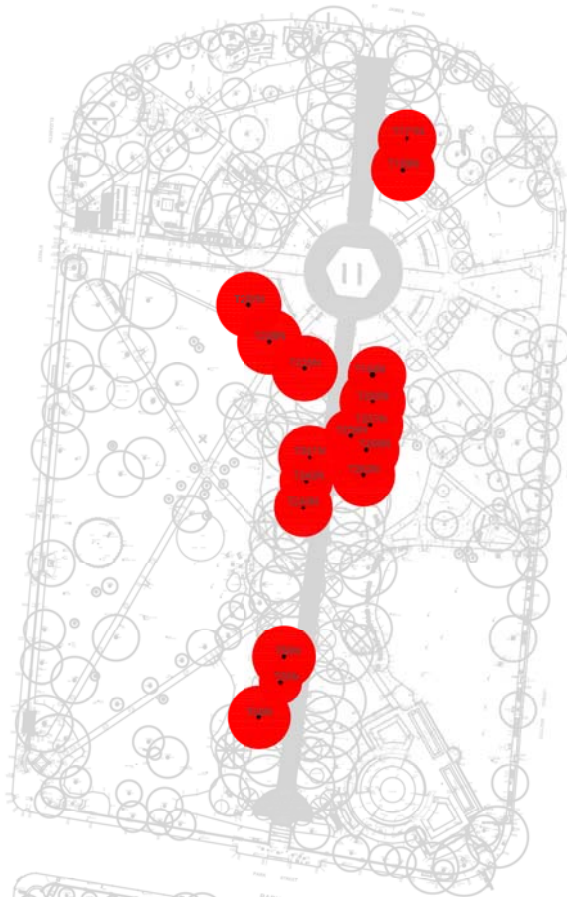


Note: Hyde Park South Central Avenue Hill's Figs Not Assessed in 2007



LOCATION PLAN HYDE PARK NORTH AND SOUTH

TITLE:	©CENTRAL AVENUE HYDE PARK NORTH ONLY TREE LOCATION PLAN (EXTENT OF SUNSCALD, TWM IN 2007)		
CLIENT:	The Council of the City of Sydney		
PROJECT:	Assessment of Central Ave Hill's Figs (Consultant Arboricultural Services Contract No.1038).		
DRAWING NO:	2110-J18 TLP-Sunscald Sheet 1 of 1		
BASED ON:	Tree Wise Men® Pty Ltd report 1487 Aerial dated May 2007		
DRAWN BY:	SB	DATE:	3/04/2013
SCALE:	1:2500@A3		



TREE WISE MEN®
AUSTRALIA PTY LTD

©2011 Tree Wise Men® Australia Pty Ltd All Rights Reserved. This Plan is copyright and shall not be reproduced or copied in any form or by any means (graphic, electronic or mechanical including photocopy) without the written permission of Tree Wise Men® Australia Pty Ltd. This Plan has been prepared for the exclusive use of the Client who we grant a license to use for the purposes of this project and site only. Tree Wise Men® Australia Pty Ltd accepts no responsibility for its use by other persons. This Plan should be considered in conjunction with other Tree Wise Men® Australia Pty Ltd documentation related to this project.

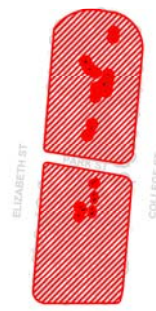
ARBORICULTURAL CONSULTANCY

84 Fuller Street, Collaroy Plateau NSW 2097
Phone +61 2 9981 5219 Fax +61 2 9971 0881
treewise@treewisemen.com.au
www.treewisemen.com.au



LEGEND

Tree with sunscald identified in 2012:



LOCATION PLAN HYDE PARK
NORTH AND SOUTH

TITLE: ©CENTRAL AVENUE HYDE PARK
TREE LOCATION PLAN
(EXTENT OF SUNSCALD, TWM IN 2012)

CLIENT: The Council of the City of Sydney

PROJECT: Assessment of Central Ave Hill's Figs
(Consultant Arboricultural Services
Contract No.1038).

DRAWING NO: 2110-J18 TLP-Sunscald Sheet 1 of 1

BASED ON: Tree Wise Men® Pty Ltd report FinalRevC
1487-2012Mon dated Jul 2012

DRAWN BY: SB **DATE:** 3/04/2013

SCALE: 1:2500@A3

